



Spatial Suite for Maximo

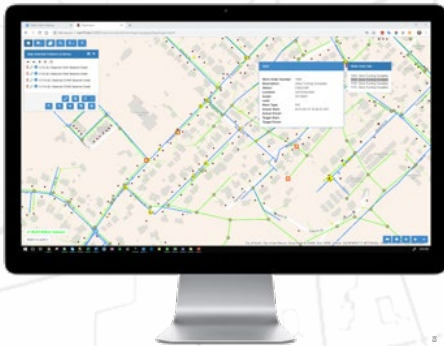
The road to integration success



Release Ready
Specialty

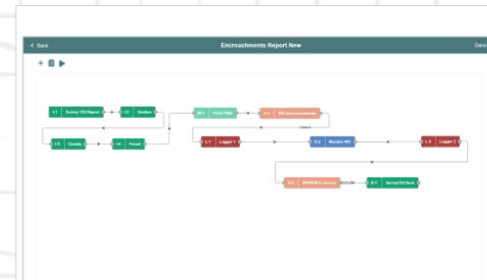
MapEngine

The first and best spatial integration and visualization app for Maximo.

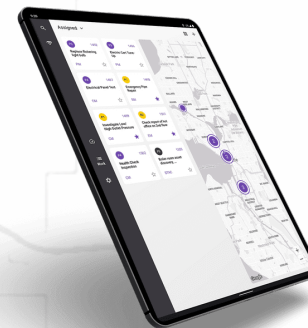


Nash Workflows

Deploy EAM/GIS workflows rapidly, leveraging the software you already have.

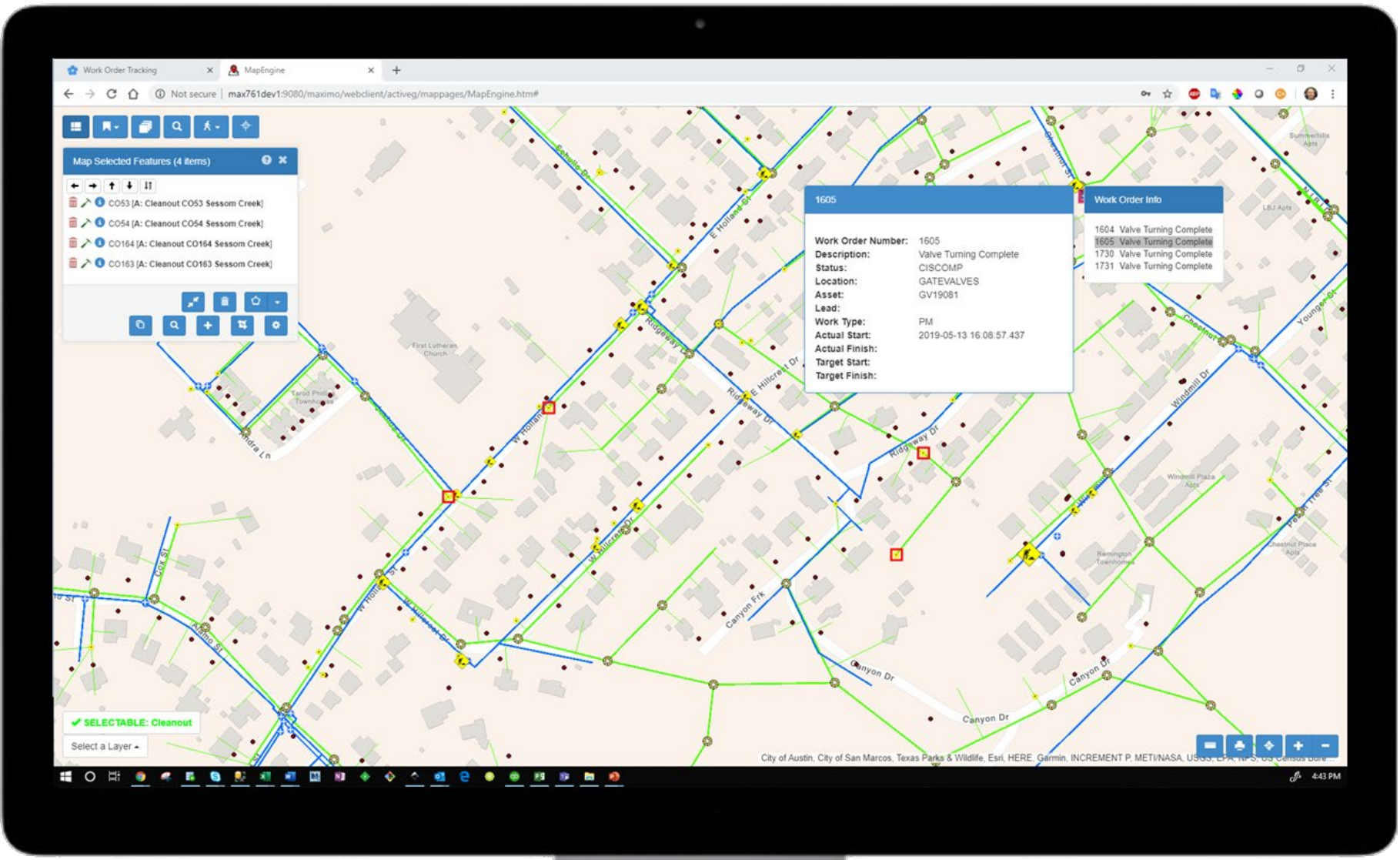


Opqo by Sharptree
Game-changing mobile solution for Maximo. Compatible with MapEngine.



Advanced GIS Integration Services

No one has more experience at delivering spatial program solutions for Maximo and ArcGIS.



Map Selected Features (4 items)

- CO53 [A: Cleanout CO53 Sessom Creek]
- CO54 [A: Cleanout CO54 Sessom Creek]
- CO164 [A: Cleanout CO164 Sessom Creek]
- CO163 [A: Cleanout CO163 Sessom Creek]

1605

Work Order Number: 1605
Description: Valve Turning Complete
Status: CISCOMP
Location: GATEVALVES
Asset: GV19081
Lead:
Work Type: PM
Actual Start: 2019-05-13 16:08:57.437
Target Start:
Target Finish:

Work Order Info

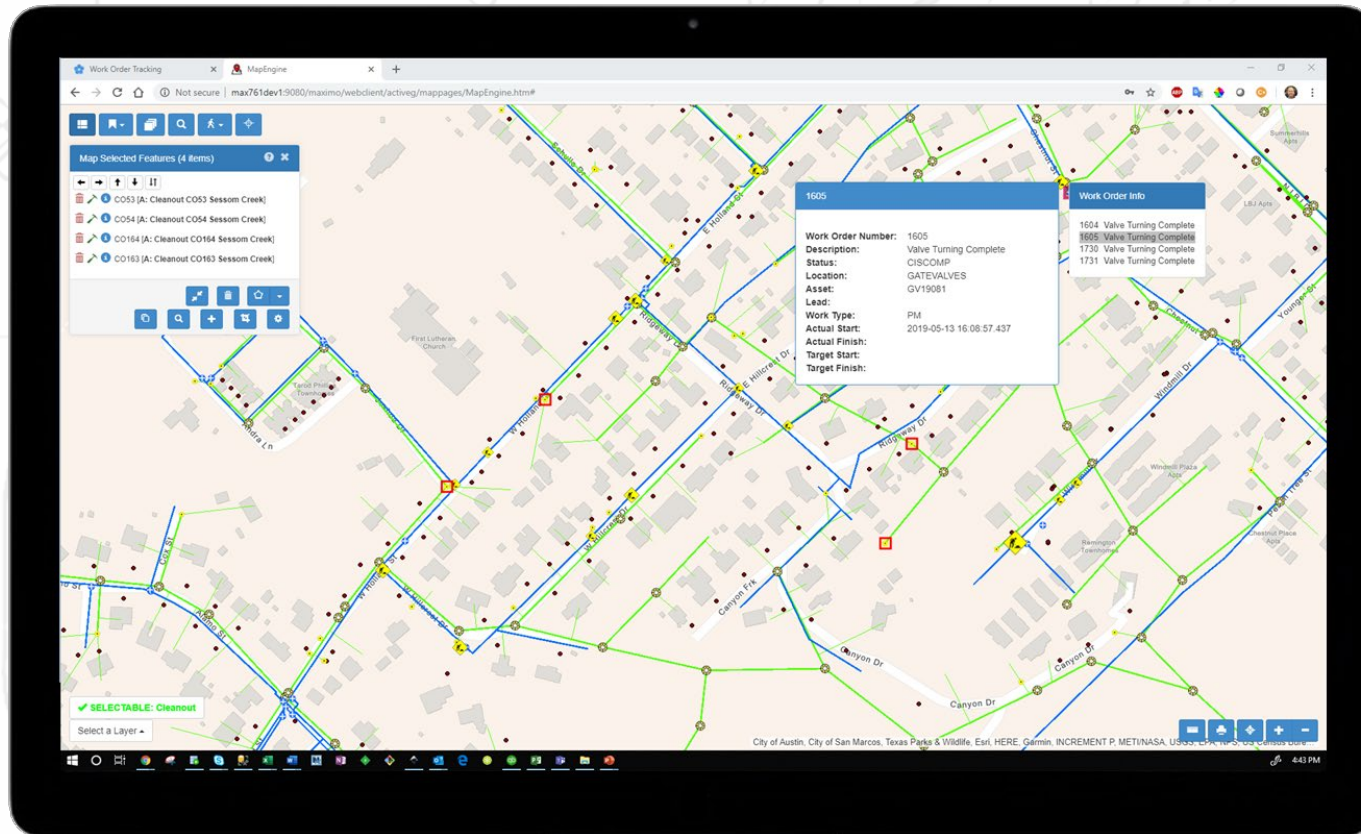
- 1604 Valve Turning Complete
- 1605 Valve Turning Complete
- 1730 Valve Turning Complete
- 1731 Valve Turning Complete

SELECTABLE: Cleanout
 Select a Layer

City of Austin, City of San Marcos, Texas Parks & Wildlife, Esri, HERE, Garmin, INCREMENT P, METI/NASA, USGS, CPA, © 2019

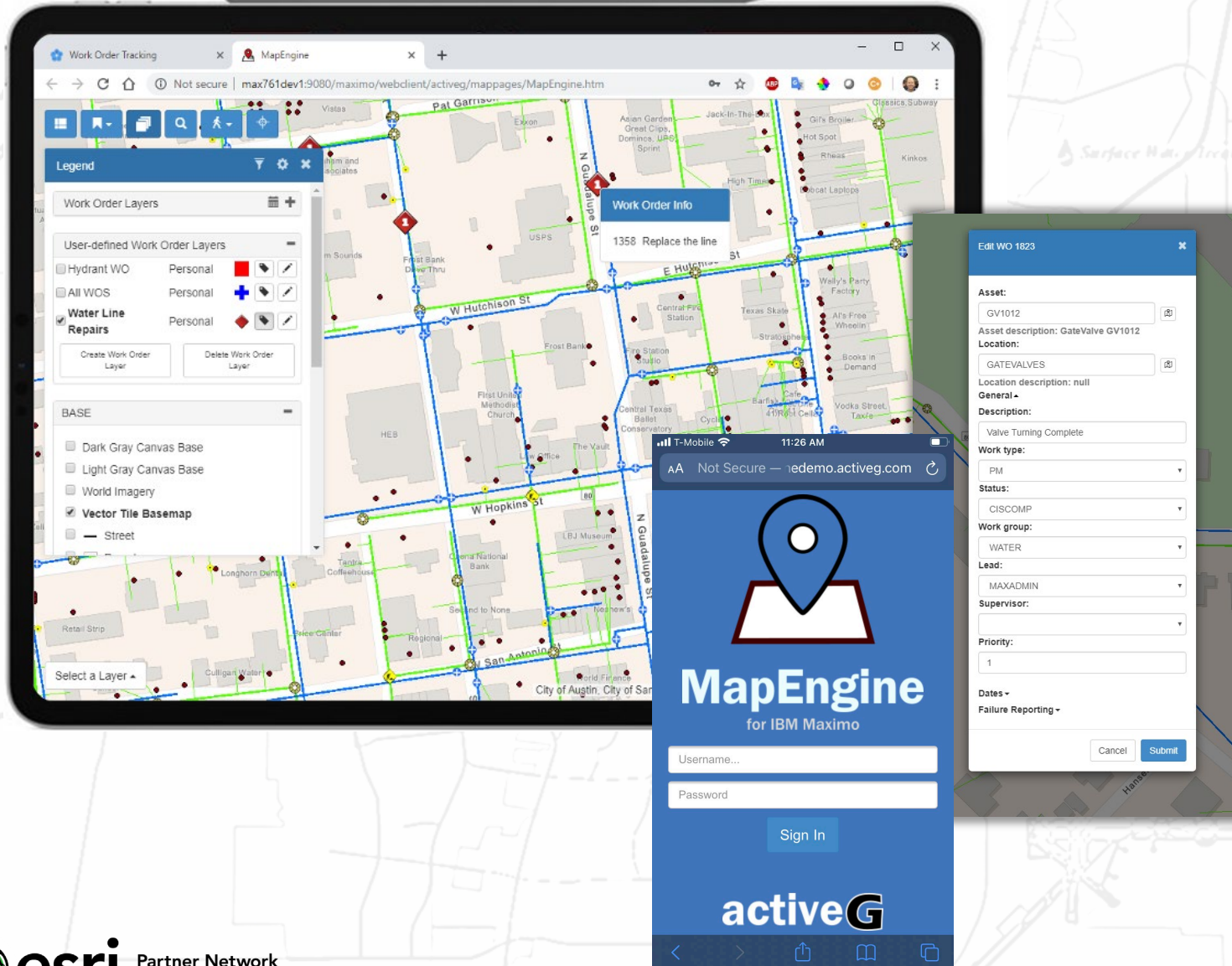
4:43 PM

ActiveG MapEngine™

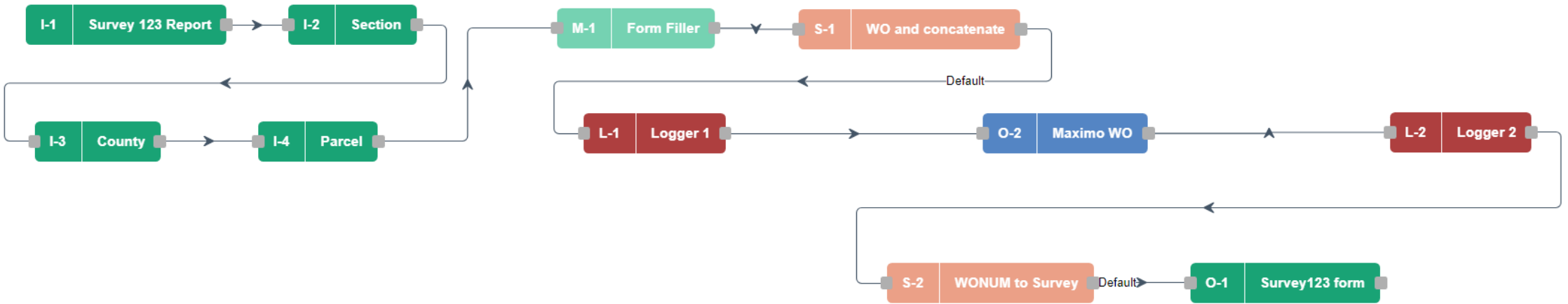


- A framework for spatial solutions in Maximo
- Geospatial visualization of your Maximo data
- Spatial input/output for Maximo.
- Run it with or without Maximo Spatial.
- 20+ years in the making

MapEngine Key Features/Benefits



- **Personalization and Flexibility**
 - View your data your way
 - Responsive, mobile-friendly
 - Bigger map, dual screen-capable
- **Deep Searching**
 - Define searches that fit business processes
 - Summary/report mode
 - Leverage Maximo saved queries
- **Mass changes based on geolocation**
 - Create work orders for selected assets, based on templates
 - Update field values on map-selected work orders.
- **Linear Ready**
- **Optimized Routing**

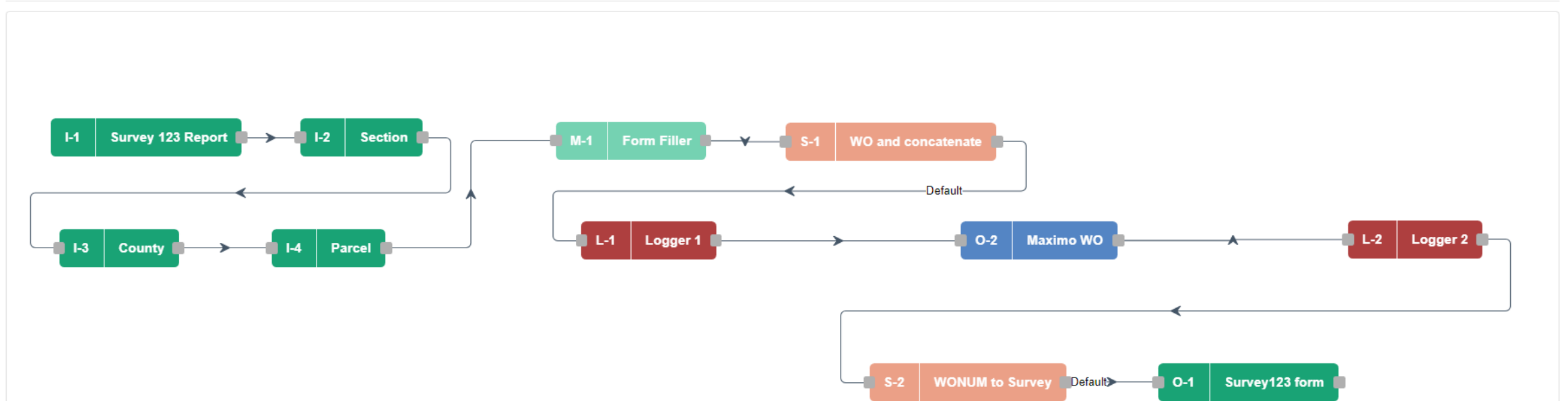


What is ActiveG Nash Workflows?

< Back

Encroachments Report New

Danny ▾



What is ActiveG Nash Workflows?

- Powerful, no-code process automation web application for **ArcGIS**.
- REST API integration with **IBM Maximo**, **ServiceNow**, and more.
- Native geo inputs to enrich your asset data.
- Enables Esri field apps with robust business logic.

