

# WMMUG MaxTalk

TESTING & TUNING  
FOR OPTIMAL  
MAXIMO QUALITY



*PRANJAL DUTTA, KDJT SOLUTIONS INC.*

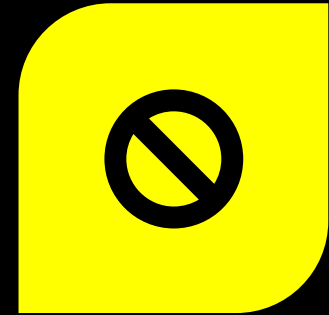
[www.kditsolutions.com](http://www.kditsolutions.com)

[dutta@kditsolutions.com](mailto:dutta@kditsolutions.com)

MAXIMO  
TESTING-DO YOU  
NEED IT?



YES?



NO?

# ASSUMING YES

## BEST PRACTICES OF DOING MAXIMO TESTING:

Never test as Maximo Admin

Always do job role-based testing –

- To validate Maximo Security Model
- To validate workflow business rules
- Plan for End-to-End Workflows as different roles
- Plan for integrated systems testing as in operations
  - Maximo with SAP // Maximo with Oracle // Maximo with others

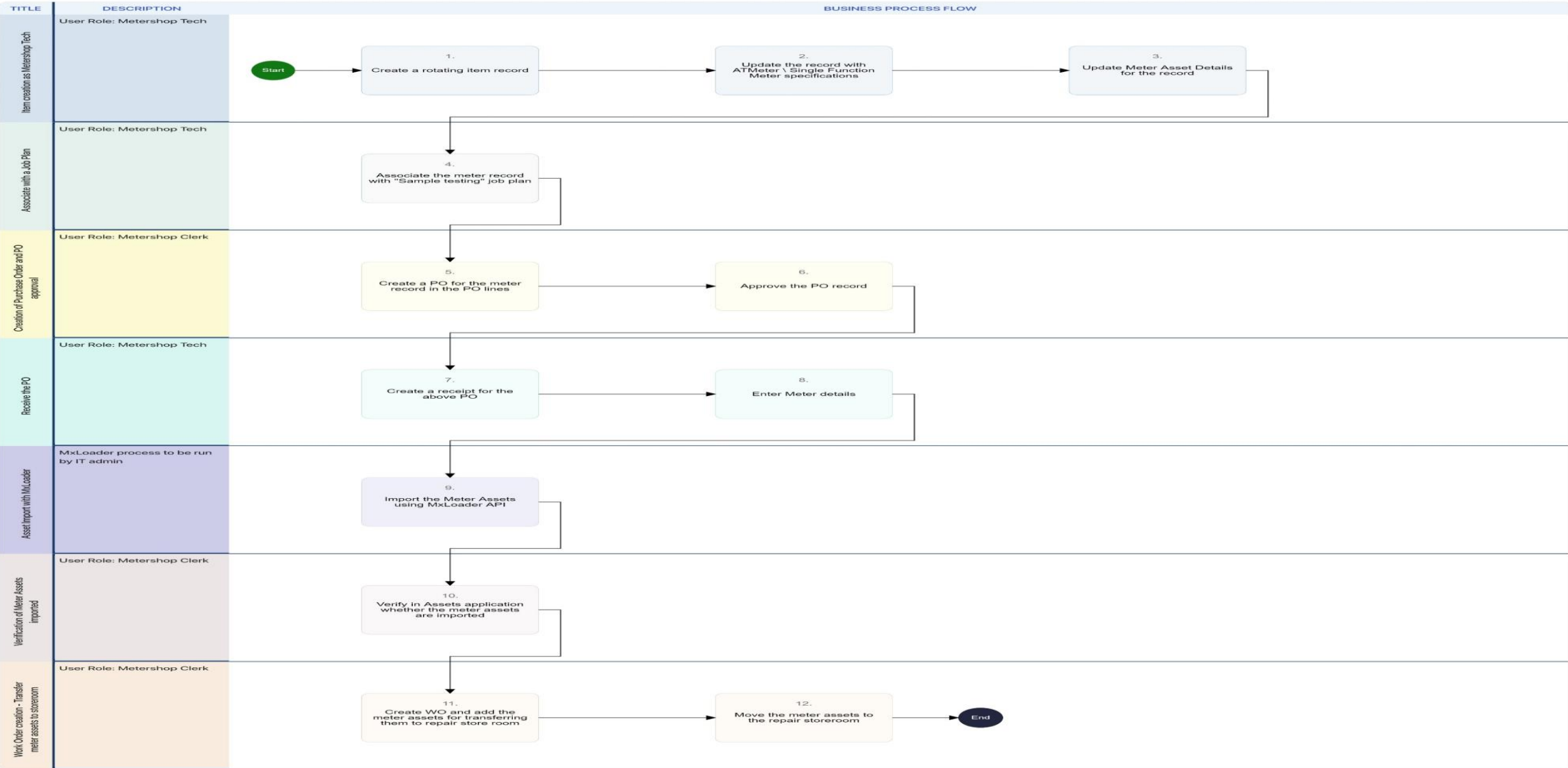
# SAMPLE – JOB ROLE BASED TESTING

## Manage Meter Assets

Test Case Description  
Manage meter assets (rotating)



Acceptance (Category)  
16/03/2023 (Date of creation)  
Pranjal (Author)



# OPTIONAL BUT RECOMMENDED – AUTOMATE THE WORKFLOW TESTING



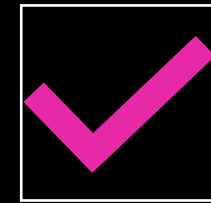
IMPROVE  
PRODUCTIVITY WITH  
AUTOMATION



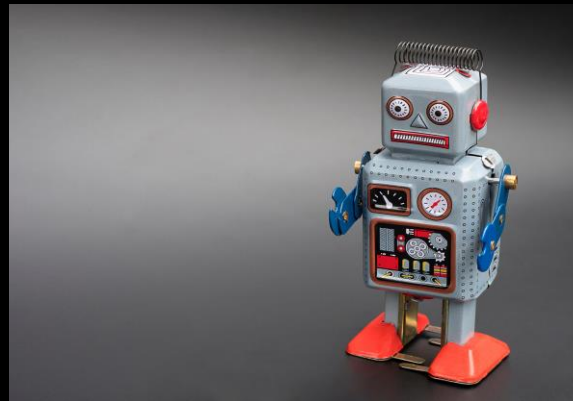
QUICK FEEDBACK



FASTER TIME TO  
CATCH DEFECTS



LESS STRESS WITH  
TESTING



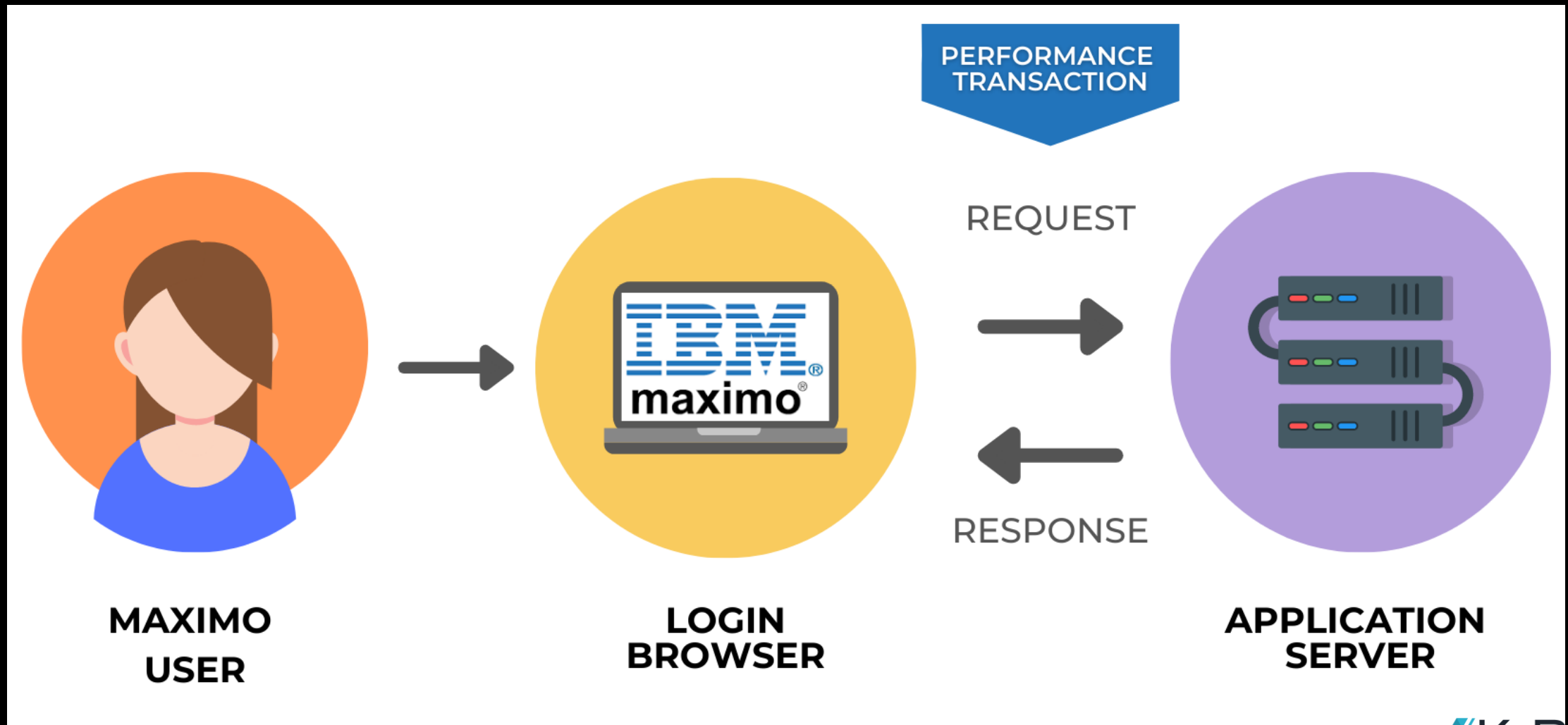
# PERFORMANCE TUNING FOR MAXIMO

## STATEMENTS FROM MAXIMO USERS

- *“We're currently using IBM Maximo as our core system around Work & Asset Management and Supply Chain. We're experiencing system wide performance issues”*
- *“When we generate our PM work orders for specific plants, it could generate 30+ work orders. When it generates the single PDF output for the 30 work orders, it can cause the rest of our server instances to come to a crawl.”*
- *“Does anybody else experience bottlenecks with BIRT reports when outputting multiple work orders into a single PDF?”*
- *“Impact of queries, start centers, scripts, or workflow causing slowness.”*
- *“As an end user it's frustrating sometimes that the issues of performance get passed backwards and forwards between the various departments, i.e. app support, database, network teams each saying it is the others problem. Do you have experiences of this and how do you combat it, best practice etc.?”*



# MAXIMO PERFORMANCE TRANSACTION



# BEST PRACTICES MAXIMO PERFORMANCE BENCHMARKING & IDENTIFYING BOTTLENECKS



**Define a Maximo Performance Transaction**



**Performance Workload Model**



**Simulation of Workload**

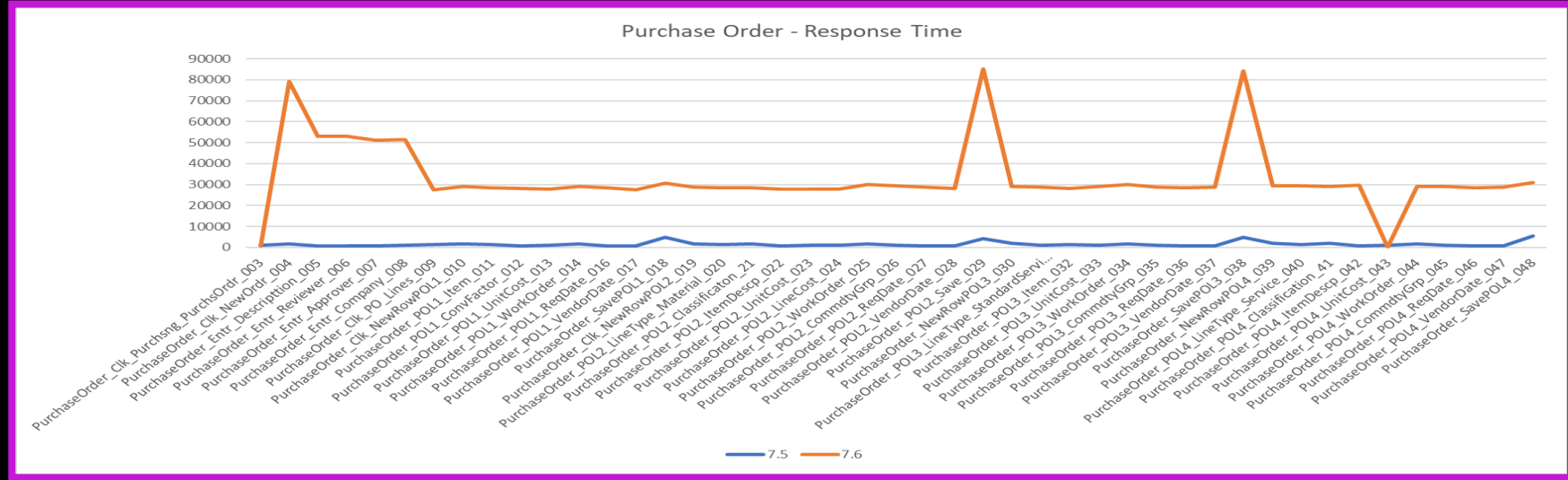


**Finding Bottlenecks**



# MAXIMO PERFORMANCE BENCHMARKING REPORT

BEFORE

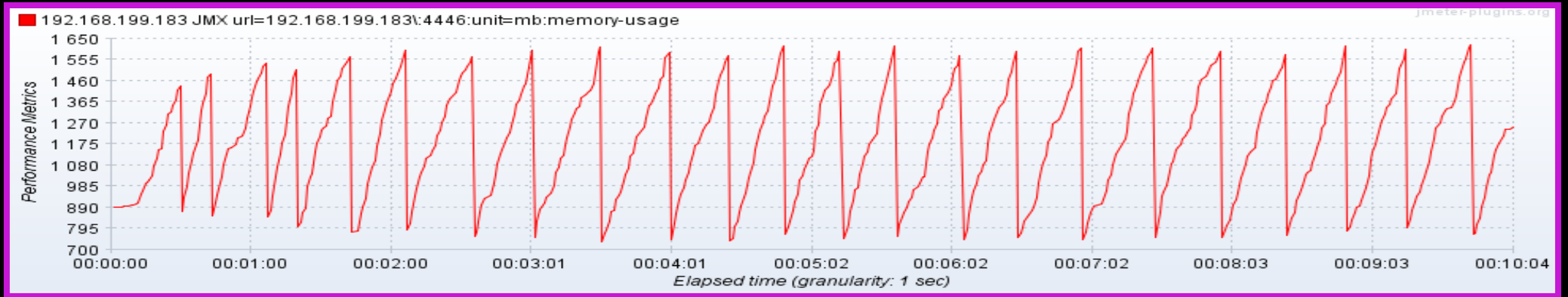


AFTER



# COMMON BOTTLENECKS

HEAP MEMORY UTILIZATION: FREQUENT GARBAGE COLLECTION IS HAPPENING



CPU UTILIZATION GRAPH: IF FREQUENT GARBAGE COLLECTION IS HAPPENING, THEN CPU UTILIZATION WILL BE HIGH.

